

RADIAL BEARINGS

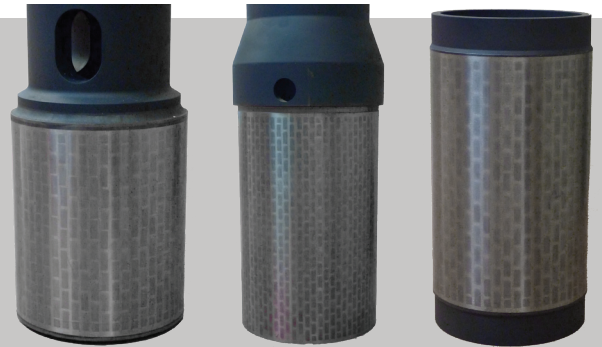
Product Sheet

ASHMIN

Since commercialisation in 2012, Ashmin radial bearings have matched or exceeded the performance of all leading bearing manufacturers. By reducing wear, Ashmin radial bearings help lower net operating costs and reduce downtime. As a result, demand for Ashmin radial bearings has doubled annually.

Applications & Advantages

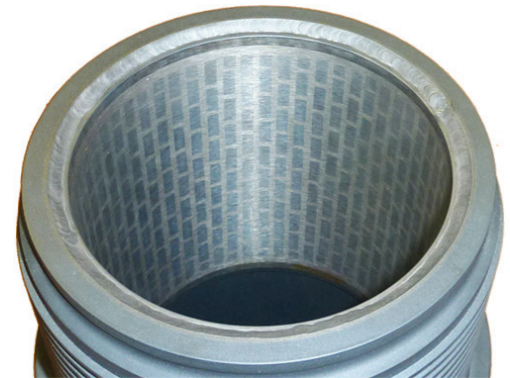
- » Most tested bearing materials on the market
- » Decreases wear to help lower operating costs
- » Ideal for high bend, direction applications
- » Can be customised to upgrade existing fleet
- » Proven in all major sizes
 - 4-3/4" and up feature tiles
 - 3-3/4" and down feature proprietary direct application carbide



Male fixed welded Male floating Male compression

Traditional radial bearings suffered from accelerated wear, succumbing to a loss of stability and eventually unscheduled trips due to motor failure. To address this common weakness, Ashmin engineered a custom bearing tester to simulate downhole conditions, including a controlled slide loading force.

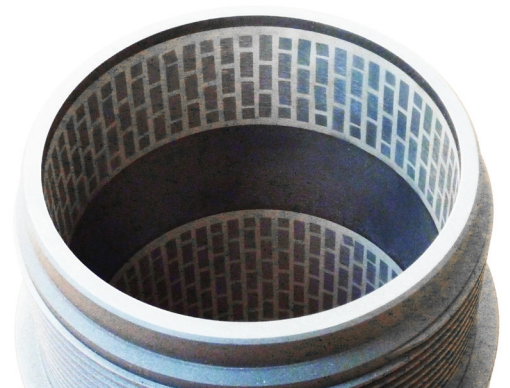
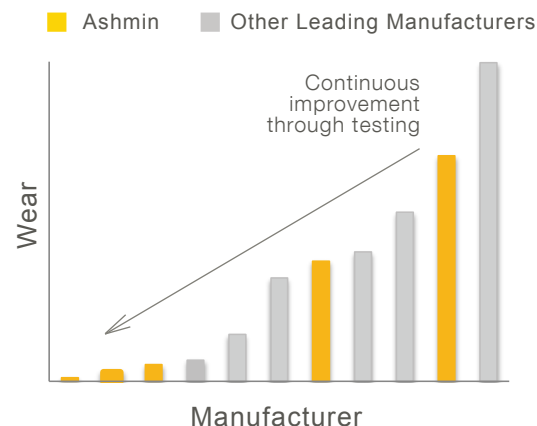
Ashmin tested over 100 leading bearings and bearing materials in coordination with a leading service company. Our aggressive testing program allowed us to select the optimal combination of binder materials and tiles to improve bonding, erosion and wear resistance (see graph below). The Ashmin radial bearings continue to prove their value for major tool rental, service, and directional drilling companies.



Female fixed welded

Wear Comparisons from Controlled Tests

Estimated from in-house testing of 100+ bearings



Female integral